

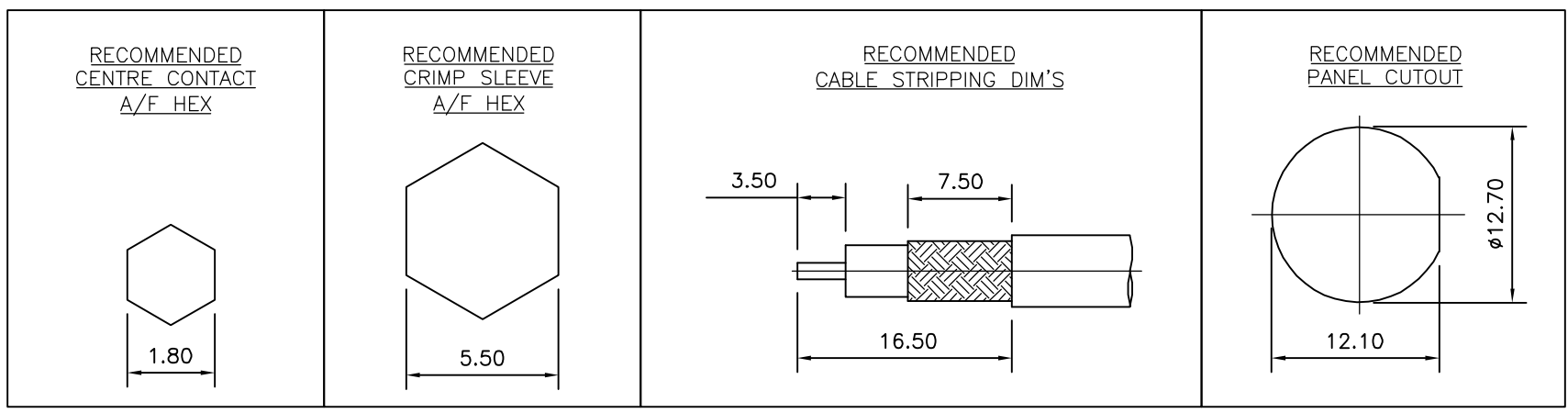
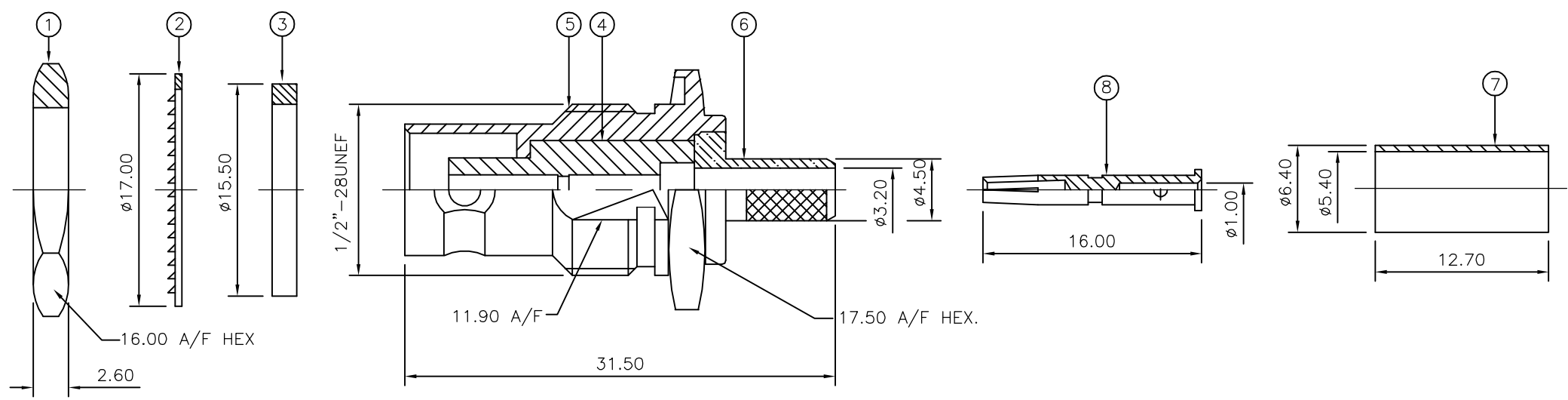
THIS DRAWING IS UNPUBLISHED. RELEASED FOR PUBLICATION NOV ,2005.

© COPYRIGHT 2005 BY TYCO ELECTRONICS CORPORATION. ALL RIGHTS RESERVED.

| LOC | DIST | REVISIONS |     |               |         |     |      |
|-----|------|-----------|-----|---------------|---------|-----|------|
| E   | B    | P         | LTR | DESCRIPTION   | DATE    | DWN | APVD |
|     |      | C         |     | ECR-05-016219 | 23NOV05 | JMS | FWK  |

NOTES:

- ① PACK IN ACCORDANCE WITH AMP SPEC 107-3275
- ② 100 TRAY PACK IN ACCORDANCE WITH AMP SPEC 107-3275
- ③ Au PLATING
- ④ Ni PLATING
- ⑤ THIS ITEM MUST BE WHITE
- 6 HAND TOOL : 9-1478240-0
- 7 DIE SET : 9-1478242-0
- 8 ELECTRICAL CHARACTERISTICS  
 FREQUENCY RANGE: DC - 4 GHz  
 NOMINAL IMPEDANCE: 50 Ohm  
 INSULATION RESISTANCE: 5000 MOhm  
 WORKING VOLTAGE: 500 Volts RMS at Sea Level  
 DIELECTRIC WITHSTAND VOLTAGE: 1500 Volts RMS Max  
 CONTACT RESISTANCE:  
 CENTRE CONTACT: 1.50 mOhm Max  
 OUTER CONTACT: 0.20 mOhm Max  
 VSWR @ 4GHz: 1.30:1 Max  
 INSERTION LOSS dB @ x 3 GHz: 0.20 Max
- 9 MECHANICAL CHARACTERISTICS  
 COUPLING NUT RETENTION FORCE: N/A  
 CABLE RETENTION FORCE: 170N Min  
 MOUNT NUT RECOMMENDED TORQUE: 4N  
 DURABILITY: 500 Cycles Min
- 10 ENVIRONMENTAL CHARACTERISTICS  
 OPERATING TEMPERATURE: -65 to +165 DegC



| QTY  | QTY PER ASSY | MATERIAL       | DESCRIPTION | ITEM |
|------|--------------|----------------|-------------|------|
| 1    | 1            | BRASS          | CONTACT     | 8    |
| 1    | 1            | BRASS          | FERRULE     | 7    |
| 1    | 1            | BRASS          | CHASSIS     | 6    |
| 1    | 1            | BRASS          | BODY        | 5    |
| 1    | 1            | PTFE           | INSULATION  | 4    |
| 1    | 1            | SILICON RUBBER | GASKET      | 3    |
| 1    | 1            | STEEL          | LOCKWASHER  | 2    |
| 1    | 1            | BRASS          | HEX NUT     | 1    |
| 6--0 | 1--0         |                |             |      |
|      |              | MATERIAL       | DESCRIPTION | ITEM |

|  |     |                                   |  |                       |     |       |     |       |     |       |     |        |     |                          |               |  |
|--|-----|-----------------------------------|--|-----------------------|-----|-------|-----|-------|-----|-------|-----|--------|-----|--------------------------|---------------|--|
| THIS DRAWING IS A CONTROLLED DOCUMENT.   |     | DWN<br>J.SANDWELL<br>23NOV05      | Tyco Electronics Corporation<br>Bideford EX39 4HE  |                       |     |       |     |       |     |       |     |        |     |                          |               |  |
| DIMENSIONS: mm   |     | CHK<br>S.PARLOW<br>23NOV05        |  |                       |     |       |     |       |     |       |     |        |     |                          |               |  |
| TOLERANCES UNLESS OTHERWISE SPECIFIED:   |     | APVD<br>F.WHEELER-KING<br>23NOV05 | NAME<br>BNC BULKHEAD JACK REAR MOUNT CRIMP 50 OHM<br>RG58C/U, 141A/U, URM43, 76, Belden 9907, KX15 |                       |     |       |     |       |     |       |     |        |     |                          |               |  |
| <table border="1"> <tr><td>0 PLC</td><td>± -</td></tr> <tr><td>1 PLC</td><td>± -</td></tr> <tr><td>2 PLC</td><td>± -</td></tr> <tr><td>3 PLC</td><td>± -</td></tr> <tr><td>4 PLC</td><td>± -</td></tr> <tr><td>ANGLES</td><td>± -</td></tr> </table> |     | 0 PLC                             | ± -  | 1 PLC                 | ± - | 2 PLC | ± - | 3 PLC | ± - | 4 PLC | ± - | ANGLES | ± - | PRODUCT SPEC<br>108-3435 | RESTRICTED TO |  |
| 0 PLC  | ± - |                                   |  |                       |     |       |     |       |     |       |     |        |     |                          |               |  |
| 1 PLC  | ± - |                                   |  |                       |     |       |     |       |     |       |     |        |     |                          |               |  |
| 2 PLC  | ± - |                                   |  |                       |     |       |     |       |     |       |     |        |     |                          |               |  |
| 3 PLC  | ± - |                                   |  |                       |     |       |     |       |     |       |     |        |     |                          |               |  |
| 4 PLC  | ± - |                                   |  |                       |     |       |     |       |     |       |     |        |     |                          |               |  |
| ANGLES   | ± - |                                   |  |                       |     |       |     |       |     |       |     |        |     |                          |               |  |
| MATERIAL<br>SEE TABLE  |     | FINISH<br>-                       | APPLICATION SPEC<br>411-3247   | SIZE<br>A3            |     |       |     |       |     |       |     |        |     |                          |               |  |
|  |     | WEIGHT<br>-                       | CAGE CODE<br>00779   | DRAWING NO<br>1337433 |     |       |     |       |     |       |     |        |     |                          |               |  |
|  |     | CUSTOMER DRAWING                  | SCALE<br>NTS   | SHEET<br>1 OF 1       |     |       |     |       |     |       |     |        |     |                          |               |  |
|  |     |                                   | REV<br>C   |                       |     |       |     |       |     |       |     |        |     |                          |               |  |